



15 Livingston Avenue, New Brunswick, New Jersey 08901

**TECHNICAL
SPECIFICATIONS
AND
INFORMATION
GUIDE**

TABLE OF CONTENTS

Contact Information	Page 3
Directions and Loading Access	Page 4
Stage Information	Page 5
Backstage and Dressing Rooms	Page 6
Lighting Equipment	Page 7, 8
Audio Equipment	Page 9
Power	Page 10
Video and Projection	Page 10
Rigging and Soft Goods	Page 10
Lineset Schedule	Page 11
Music and Orchestra Equipment	Page 13
Standard FOH Hang	Page 14
Standard Truss / Mover Hang	Page 15
Floorplans	Page 16, 17
Seating Map	Page 18
Orchestra Shell Diagram	Page 19

STATE THEATRE CONTACT INFORMATION

MAILING ADDRESSES:

Administrative Offices

State Theatre New Jersey
9 Livingston Avenue
New Brunswick, New Jersey 08901

Theatre Facility

State Theatre New Jersey
15 Livingston Avenue
New Brunswick, NJ 08901

NOTE: Please ship all deliveries for production to 15 Livingston Ave. Please list the show name or address C/O Josh Tag.

PHONE NUMBERS:

Administrative Offices	732-247-7200
Administrative Offices Fax	732-247-4005
Guest Services / Ticket Office	732-246-7469
Guest Services / Ticket Office Fax	732-745-5653

THEATRE OPERATIONS:

Joe Stoltman, <i>Vice President of Theatre Operations</i>	jstoltman@stnj.org	ext. 529
Michelle Lane, <i>Interim Production Manager</i> **	mlane@stnj.org	ext. 595
Jessica Trechak, <i>Director of Event Services (FOH)</i>	jtrechak@stnj.org	ext. 521

** Primary advance contact for all touring needs.

TICKETING:

Don McKim, <i>Director of Ticketing Services</i>	dmckim@stnj.org	ext. 522
--	-----------------	----------

IATSE LOCAL 21 DEPARTMENT HEADS:

Craig Werner, <i>Steward & Master Electrician</i>	cwerner@stnj.org
Roman Klima, <i>Head of Video</i>	rklima@stnj.org
Isaac Sloop, <i>Head Flyman</i>	isloop@stnj.org
Rich Stanek, <i>Head Technician</i>	rstanket@stnj.org
Michael G. Sivetz, <i>Head Carpenter</i>	mgsivetz@stnj.org
Zach Vivino, <i>Head Audio</i>	zvivino@stnj.org

EXECUTIVE STAFF:

Sarah K. Chaplin, *President & CEO*
Howard Levine, *Vice President of Marketing and Guest Services*
Susan Levine, *Chief Financial Office*

DIRECTIONS AND LOADING ACCESS

TO THEATRE LOBBY / TICKET OFFICE – 15 LIVINGSTON AVE

From north or south take NJ Turnpike (Rt. 95) exit # 9, or U.S. Route # 1: From Turnpike or Route 1 get on Rt. 18 north, following signs to New Brunswick. Follow 18N to New Street exit and go to the third traffic light (Livingston Avenue) and turn right. State Theatre is 1/2 block on the left.

From the west (I-80, I-78, or US 22): Take 287 south to exit 10 (New Brunswick). Bear right onto Easton Avenue and continue approximately 5 miles to the end of Easton. Turn left on to Albany Street, go to first traffic light and turn right (George Street). Go four blocks to Livingston Avenue and turn right. The theatre is 1/2 block on the right.

TO THEATRE LOADING DOCK – FOR GPS PURPOSES, USE 68 BAYARD STREET

From north or south take NJ Turnpike (Rt. 95) to exit 9, Route 18 North, take the New Street exit off of Route 18 (approx. 5-10 minutes), right at first traffic light onto Neilson Street, left turn onto Bayard Street, and go through the first traffic light at George Street. About half the way down this block (before the TD Bank) is a parking garage. The theatre's double tractor-trailer bays are accessible via the parking garage's main entrance. Access requires drivers to back via a 90 degree turn off of Bayard Street.

LOADING ACCESS:

The loading door is 15' High x 12' Wide and is located directly on stage left. The loading dock is a shared double tractor-trailer bay at truck height. Due to its shared use with the New Brunswick Performing Arts Center, it will be determined during advance if both bays are able to be used, and if trucks are able to remain in the dock for the duration of the day. Loading path is a 60' push from truck to loading door with a gentle slope down in elevation between the dock and the door at stage level. Trailers sit at a relatively steep incline while in the loading dock with the low-point at the tail of the trailer – please advance your truck pack as extra loaders may be needed to due the downward slope. There is an approximately 45-degree turn immediately at the beginning of the loading path, necessitating the thoughtful placement of trailers containing long items on multi-truck shows.

BUS / VEHICLE PARKING:

ALL PARKING MUST BE ADVANCED, due to the need to purchase parking spaces. The theatre has no off-street parking. Bus parking is available behind the theatre on Bayard Street where they are permitted to run on generator power. On-site vehicle parking can be provided if needed at purchased bagged meters. Additional vehicle parking is available at nearby NBPA parking garages.

STAGE INFORMATION

STAGE TYPE: Proscenium

AUDIENCE CHAMBER:

Total Capacity	1750
Pit Seating	32
Orchestra	834
Loge	95
Box	16
Balcony	616
Gallery	157

See page 16 for seating map.

STAGE DIMENSIONS:

Proscenium Height	28' - 7"
Proscenium Width	45' - 9"
Stage Width: Wall to Wall	86' - 9"
Stage Left Wing Space	25' - 6"
Stage Right Wing Space	15' - 6"
Stage Depth: PL to US Wall	38' - 0"
Stage Height above Audience Level	3' - 4"
Grid Floor Overstage	55' - 7"
Pin Rail Overstage	32' - 7"
Apron Pit Cover Depth: PL to DS edge @ Center Line	12' - 0"
Apron Pit Cover Depth: PL to DS edge @ SR / SL	7' - 0"
Stage Edge to Control Booth	95' - 0"
Near Booms to Proscenium	25' - 0"
Far Booms to Proscenium	55' - 0"

APRON PIT COVER:

The pit cover requires manual disassembly and reassembly to move between its three elevations – stage level, audience level, pit level. When not in use as an apron or orchestra pit, the pit is seated with two rows of free-standing chairs. When in use as an orchestra pit, the pit is approximately 18" deep. Access to orchestra pit is through the house only via an access door from stage left.

STAGE FLOOR:

The stage floor is sprung on 2x4 sleepers completely isolated by neoprene pads from hard contact with rigid members. The deck is ¾" plywood and surfaced with Masonite and fully blacked. Marley (Black/Gray) is also available upon request during Advance.

BACKSTAGE AND DRESSING ROOMS

All dressing rooms are located off stage right with a full crossover corridor behind the upstage wall. Floor plans are available on pages 14 and 15.

FIRST FLOOR:

(3) Star Dressing Rooms:

Each room is equipped with a makeup counter, lighted mirror, full-length mirror, and private restroom with shower and can accommodate 1-3 people.

Green Room:

Furnished with upholstered furniture and wall-to-wall carpeting, this room is also equipped with a kitchenette with sink, counter, microwave, and refrigerator. This room can also serve as a private lounge or receiving room.

Wardrobe Room:

Laundry facilities: (2) Washers, (2) Dryers

Equipped with wardrobe racks, irons, ironing boards, and steamers.

Use of steamers is only permitted when a wardrobe crew member is on-site.

Production Office:

The theatre has NO dedicated production office. The Green Room and 1st Star Dressing Room are the most commonly selected rooms when a production office is required.

Currently there is no phone line or hardline internet access available backstage. Wi-Fi is strong and steady throughout the building.

SECOND FLOOR:

(2) Chorus Rooms:

Each with lighted makeup mirrors, counters, and chairs, these rooms can accommodate 15-20 people. Rolling racks for costumes can be provided as required. Each room has a multi-stall restroom with shower attached.

(2) Principal Rooms:

Contained within the above chorus rooms, these rooms are equipped with makeup counter and lighted mirrors and can accommodate 1-5 people. They are accessed via the chorus rooms and can serve as extra space for chorus or as semi-private dressing rooms. Bathroom facilities are shared with the chorus rooms.

LIGHTING EQUIPMENT

CONTROL CONSOLE:

ETC Ion – located in the control booth at the rear of the orchestra. Designer can be provided with a monitor in the house for setting levels and for technical rehearsals.

FOLLOWSPOTS: 4 3000W Lycian 1295 ELT Followspot

ELLIPSOIDALS: HUNG FRONT OF HOUSE

20 ETC S4 10 degree – Far Box Booms

24 ETC S4 19 degree – Near Box Booms

AVAILABLE INVENTORY

20 ETC S4 19 degree

60 ETC S4 26 degree

60 ETC S4 36 degree

16 ETC S4 50 degree

PRE-RIG TRUSS: 12 Double-Hung Truss with Silver Aluminum Pars

AUTOMATED FIXTURES: 12 High End SolaFrame 750

8 High End SolaHyBeam 1000

4 High End SolaFrame Theatre – Permanently installed FOH

FRESNELS: 8 750W 6"

10 1000W 8"

PARS: 40 1000W Par 64

60 ETC S4 PAR

5 ACL Bars

CYC LIGHTS: 24 ETC ColorSource CYC

ATMOSPHERE: 2 DF 50 Hazers

1 La Maitre Hazer

1 La Maitre Fogger

ACCESSORIES: 18 Drop Iris

30 Template Holder

8 10' / 15' Booms with Bases

36 18" / 24" Sidearms

8 6" Barndoors

10 8" Barndoors

16 Coloram II Scrollers for ETC Source 4 or PAR

2 EFX Plus² Gobo Rotators

FOCUS ELEVATION: 36' Working Height GENIE (DC operation w/ spare battery)
26' A-Frame Ladder + Assorted Step Ladders

DIMMERS: 376 Sensor Dimmers – wired dimmer per circuit – 2.4 K unless noted

CIRCUIT DISTRIBUTION:

<u>FRONT OF HOUSE</u>	<u>STAGE RIGHT</u>	<u>STAGE LEFT</u>
#1 Box Booms	1 - 31 odd	2 - 32 even
#2 Box Booms	33 - 71 odd	34 - 72 even
Proscenium Cove	298-299-300-301	
Control Booth	285-286-287	
Proscenium Wall	277 - 283 odd	278 - 284 even
Backwall	265 - 271 odd	266 - 272 even
Backwall Center	273-274-275-276	

<u>ONSTAGE</u>	<u>STAGE RIGHT</u>	<u>STAGE LEFT</u>
#1 Floorpocket	225 - 231 odd	226 - 232 even
#2 Floorpocket	233 - 239 odd	234 - 240 even
#3 Floorpocket	241 - 247 odd	242 - 248 even
#4 Floorpocket	249 - 255 odd	250 - 256 even
#5 Floorpocket	257 - 263 odd	258 - 264 even
Stage Right Back Wall	289-290-291-336	

<u>ELECTRIC BATTENS</u>	<u>STAGE RIGHT</u>	<u>STAGE LEFT</u>
#1 Electric	73 - 107 odd	74 - 108 even
#2 Electric	109 - 131 odd	110 - 132 even
#3 Electric	133 - 155 odd	134 - 156 even
#4 Electric	157 - 191 odd	158 - 192 even
#5 Electric (3) 50A, 6K drop boxes:	293-295-297	

<u>PINRAIL CIRCUITS</u>	<u>STAGE RIGHT</u>	<u>STAGE LEFT</u>
Box # 1	193 - 199 odd	194 - 200 even
Box # 2	201 - 207 odd	202 - 208 even
Box # 3	209 - 215 odd	
Box # 4	217 - 223 odd	

HOUSE LIGHTS 318 - 335

LIGHTING POSTIONS / PLOTS:

We have no FOH lighting positions other than our box booms and no points for a FOH truss. The house does not have a standard dance rep. plot. Plots will be hung per show requirements.

See page 13 for standard FOH hang.

See page 14 for standard truss / mover hang – though commonly we do not hang the DS.

AUDIO EQUIPMENT

House sound system is an L-Acoustics KUDO system – (12) cabinets per side – and permanently flown. Up to (6) L-Acoustics SB28 subs – (3) per side – can be used downstage left and right at proscenium in *omni* or *cardiod* patterns. (4) L-Acoustics 8XT front fills can be placed on downstage edge. House fills fed from the left and right drivelines are (2) L-Acoustics ARC Focus, (2) L-Acoustics 5XT, (6) 8XTi – delayed and tuned to the main left and right PA stacks. System is powered and tuned by (10) L-Acoustics LA8 and (2) L-Acoustics LA4X amplifiers. Amplifiers are driven by (2) Lake LM-44 processors, located at FOH. Separate house and guest consoles can be patched simultaneously to drive LEFT, RIGHT, SUB, and FRONT FILL speakers. FOH mix position is located at the rear of the orchestra underneath the balcony. It is not enclosed.

If it is not desirable to tie-in to our system, it is possible to ground stack inside the proscenium.

CONSOLES:

Yamaha PM10 – 96 input and 32 output

Yamaha CL5 with (2) Rio 3224-D2 Racks – 64 input and 32 output

The PM10 is considered the FOH console and CL5 the monitor console, but both are moveable and either can be used for FOH or monitors.

MICROPHONES:

- 8 Shure SM 57
- 4 Shure BETA 57
- 4 Shure Sm 58
- 6 Shure Beta 58
- 6 Shure Sm 81
- 1 Shure Beta 52
- 3 Shure Beta SM 98
- 1 Shure VP 88 Stereo
- 4 Shure KSM 32
- 6 AKG C414B/ULS
- 2 AKG D112
- 4 Sennheiser E609
- 5 Sennheiser MD 421
- 2 Sennheiser MD 441
- 2 Sennheiser ME66/K6
- 2 Neumann KMS 105
- 4 Neumann KM 184
- 1 Audix OM5
- 1 Beyer M 88
- 3 Crown PCC 160
- 8 Countryman Isomax DI
- 8 Whirlwind Passive DI

SPEAKERS:

- 16 L-Acoustics 112P Wedges
- 2 L-Acoustics SB15P Subs
- 4 Meyer UPM Self-Powered Wedges
- 4 Meyer UPJ Self Powered Cabinets
- 2 EAW KF 650 Cabinets
- 2 EAW SB 250 Subs
- Crown Power Amps

WIRELESS MIC SYSTEMS:

- 4 Shure U4D Receivers
- 4 Shure UR4 Receivers
- 8 Handheld Transmitters
- 6 Belt Packs
- 8 Beta 58 Capsules
- 4 SM 58 Capsules
- 4 Beta 87 Capsules
- 2 Sennheiser MKE 2 Lavaliers
- 2 DPA 4088 Headset
- 4 Countryman E6 Microphones

Theatre is equipped with a complete ClearCom system with wireless capability and a complete backstage paging and stage monitor system.

House is equipped with a Sennheiser Infrared Assistive Listening System.

POWER

Available company switches equipped with cam-lok tails are as follows:

600 amp, 3-phase service (SR)

150 amp, 3-phase service (SR or SL) – Isolated for Audio / Video

VIDEO AND PROJECTION

Main FOH Projector is a Barco DP2K-32B Series 2 2K projector with Barco 2K 2 85-50:1 motorized zoom. The projector is located with the follow spots in the booth at the rear of the balcony. The projector is lamped with a Ushio DXL-45BA 4 5K lamp.

There is a custom Stewart 46-foot diagonal perforated movie screen. The US cyc is available for full-stage image projection upstage of performers. Additionally, a 10' x 14' screen can be hung over-stage for IMAG or in-show usage – this screen can be flown in and outfor intermittent use as needed.

Video control is located in the control booth at the rear of the orchestra and contains a Folsom ImagePRO-II Switcher and Denon Blu-Ray Player as well as laptops with QLab. Video control can be run to either SL or SR as needed.

The house is equipped with (2) Barco CN HD-81 B proscenium projectors with EN16 lenses and retractable 8' x 10' screens – capable of displaying content independent of the stage. These are run through a Folsom ImagePRO-II Switcher and can be used for in-show content or IMAG. Both projectors must display the same image. On most shows, screens are used pre-show to display advertising of STNJ upcoming shows and recognized sponsors. If only used pre-show, these screens are retracted 5 minutes prior to curtain.

RIGGING AND SOFT GOODS

TRUSS:

45 feet of 12" x 18" truss with load capacity of 2,100 lbs.

SOFT GOODS:

House Curtain	Plum Red Velour – 50% fullness
Legs	(4) Sets Black Velour @ 28'x13'
Borders	(6) Black Velour @ 10'x54"
Traveler	(2) Black Velour @ 28'x54 – 50% fullness – Mid-Stage used as #3 Legs
Scrim	Black Sharks Tooth @ 28'x 50'
Cyclorama	White Muslin @ 28'x50'
Blackout	Black Velour 28'x 50' – no fullness

GRID / RIGGING POINTS:

Wells are on 7' centers and furthest available offstage points are 21'-6" from Center.

Lineset Schedule - 2021

8/11/22

0' - 0" Plaster Line is 2' Up Stage from Deck Edge

Set	Distance	What	Available?	Winch Type
#1	0' - 6"	Fire Curtain	NOT AVAILABLE	
#2	1' - 4"	Main Curtain		Manual
#3	2' - 10"	#1 Leg and Border		Variable
#4	3' - 8"	#1 Electric		Fixed Speed
#5	4' - 3"	Orchestra Shell #1	NOT AVAILABLE	
#6	5' - 5"			Variable
#7	6' - 4.5"			Variable
#8	7' - 5"			Variable
#9	8' - 4.5"	#2 Border		Variable
#10	9' - 5"	#2 Legs		Variable
#11	10' - 4.5"	#2 Electric		Fixed Speed
#12	11' - 7"			Variable
#13	12' - 5.5"			Variable
#14	13' - 9"	Orchestra Shell #2	NOT AVAILABLE	
#15	14' - 7"	#3 Border		Variable
#16	15' - 7"	Mid-Stage Traveler (Goods and Tracks)		Variable
#17	16' - 7.5"	#3 Electric		Fixed Speed
#18	17' - 7"			Variable
#19	18' - 7.5"	#4 Border		Variable
#20	19' - 7"	#4 Legs		Variable
#21	20' - 7"	#4 Electric		Fixed Speed
#22	21' - 7.5"			Variable
#23	22' - 2"	Orchestra Shell #3	NOT AVAILABLE	
#24	23' - 4.5"			Variable
#25	25' - 6.5"	#5 Border		Variable
#26	26' - 4"	#5 Electric		Fixed Speed
#27	27' - 4"	Upstage Traveler (Goods and Tracks)		Variable
#28	28' - 4"			Variable
#29	29' - 3"	Orchestra Shell #4	NOT AVAILABLE	
#30	30' - 8.25"			Variable
#31	31' - 10.5"			Variable
#32	32' - 10"			Variable
#33	33' - 11"			Variable
#34	35' - 3"			Variable
#35	36' - 10"	Full Stage Black		Variable

Electrics move at a fixed rate of 20ft/minute
 Electrics usable weight limit is 1600lbs.
 Electric pipes include a non-removable raceway.

Variable Speed is 0-120ft/minute; Individual pipes (except for Electrics) usable weight limit is 840lbs.

Individual pipes (except for Electrics) usable weight limit is 840lbs.

The rigging system is comprised of JR Clancy's PowerLift® hoists, with each trussed batton having a 1,200lb lifting capacity. The system is controlled through a SceneControl™ 15 desk during load in/out and show. The variable speed motors can move at 120 fpm, and are the only line sets available for use. They are all marked *Utility* above.

MUSIC AND ORCHESTRA EQUIPMENT

ORCHESTRA SHELL:

State Theatre New Jersey is equipped with a movable orchestra shell consisting of four ceiling panels and eight rolling towers. The acoustical surface is made of quarter-saw red oak. The shell has four configurations, creating variable space dependent on the size of the event. At full its configuration with back wall in place, a maximum of 30' of risers can be placed US.

In addition to providing an excellent acoustical environment, the shell is visually stunning and provides a comfortable environment for musicians. The lighting in the shell ceiling provides an even 75 foot-candles throughout the shell.

See page 17 for a drawing of our full shell. Size can be reduced for small groups.

RISERS:

Wenger Versalite Risers – (17) @ 4' x 8' and (4) @ 4' x 6'
(19) Sets of 8" and 16" Legs
(10) Sets of 24" to 40" Telescoping Legs

PIANO:

9' Steinway Concert "D" Grand with Artist's Bench

SYMPHONY FURNITURE:

96 Wenger straight-back padded seats with adjustable feet for differing seating angles
80 Wenger black pressure music stands with compartments for mouthpieces, reeds etc.
Assorted backless stools for percussion, bass etc.
Conductor's podium and music stand with a removable brass railing.
60 music stand lights

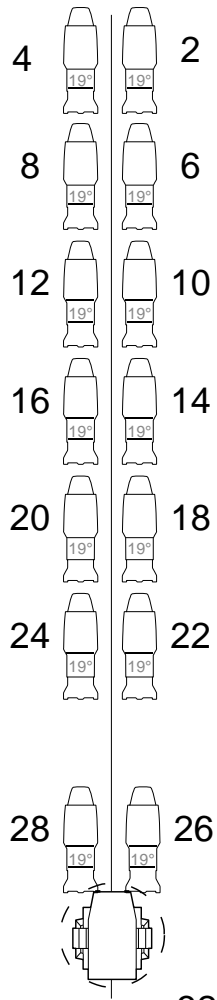
State Theatre FOH

View From The Stage

Not To Scale

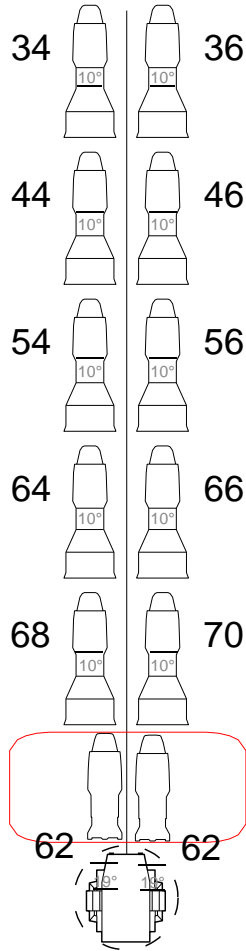
Date: 8/9/2018

SL Near Boom



32 [park]

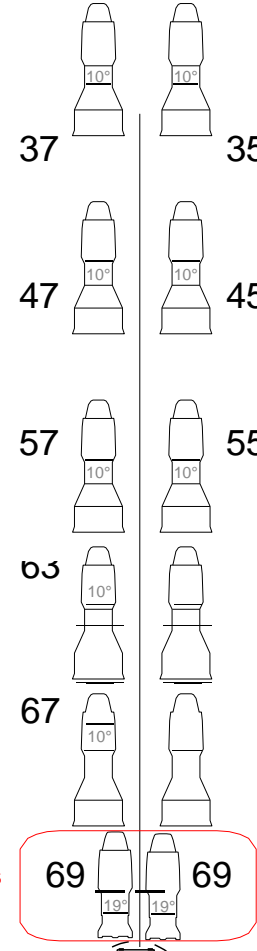
SL Far Boom



72 [park]

Curta n Warmers

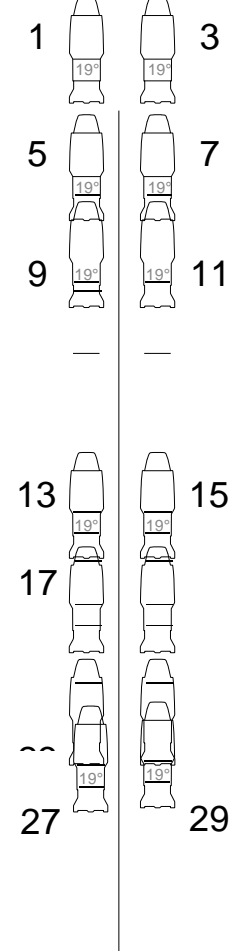
SR Far Boom



71 [park]

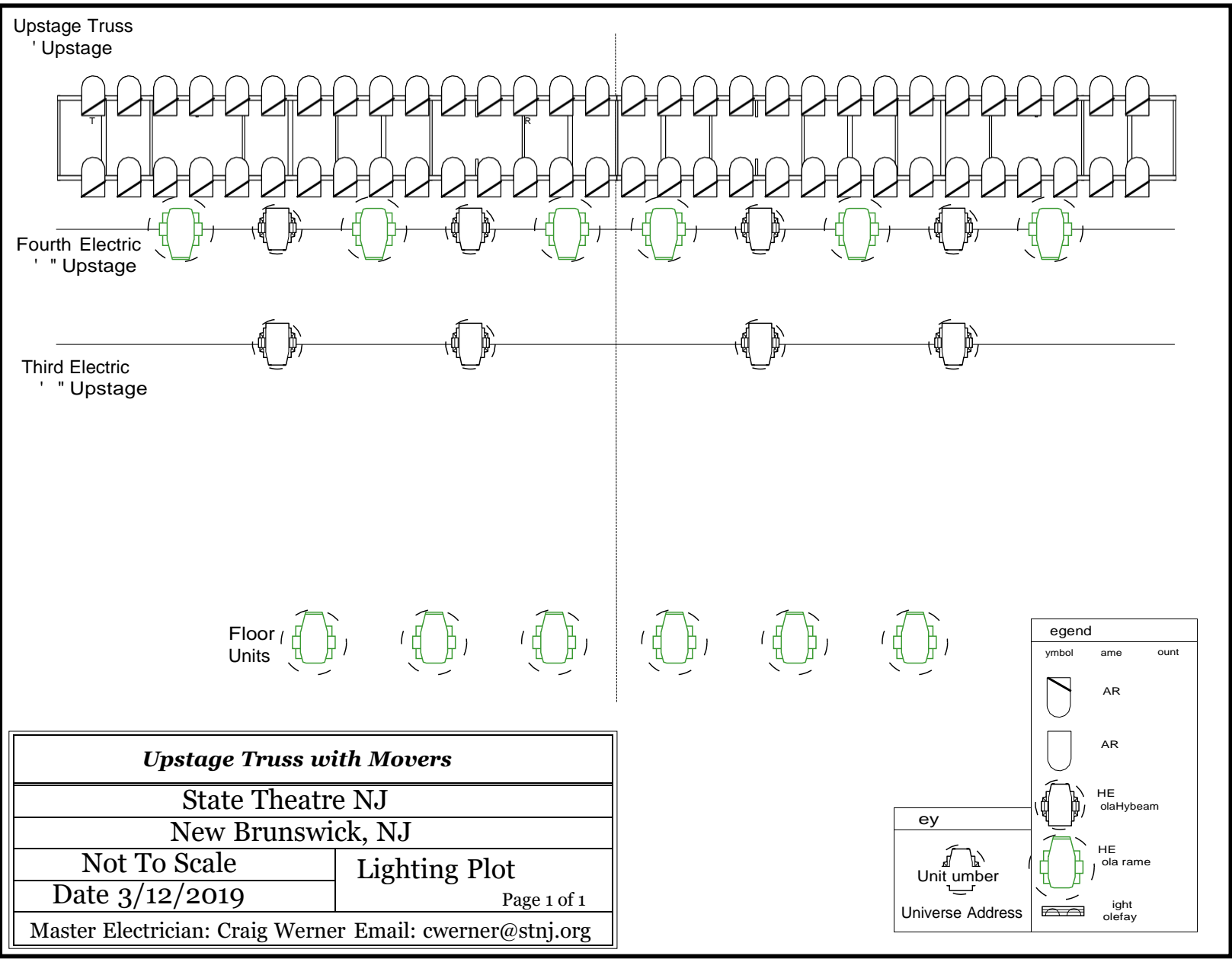
Curta n Warmers

SR Near Boom



31 [park]

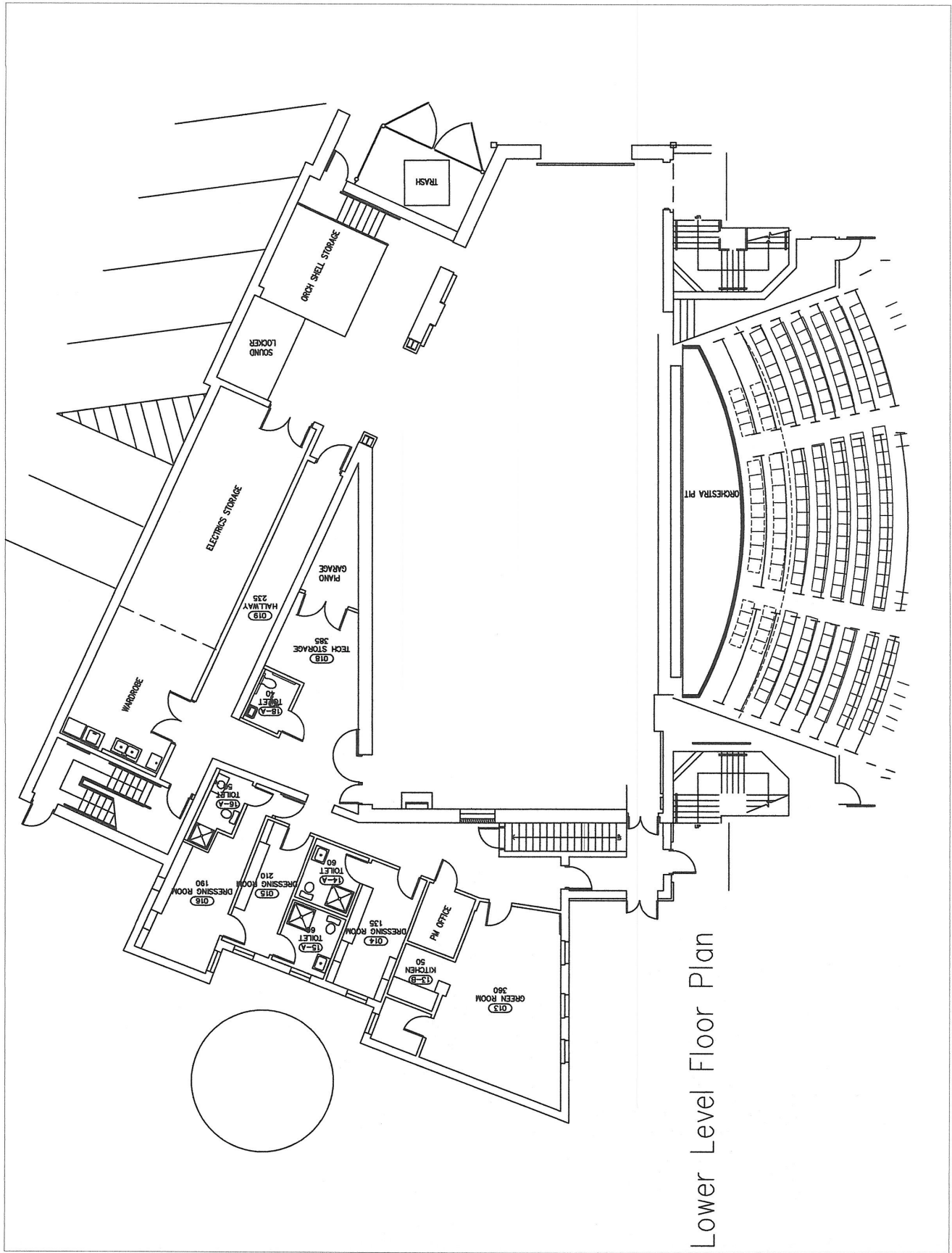
nstruments	
	Source 4 19deg
	Source 4 10deg
	HES Solo frame Theater
Legend	
	D mmer



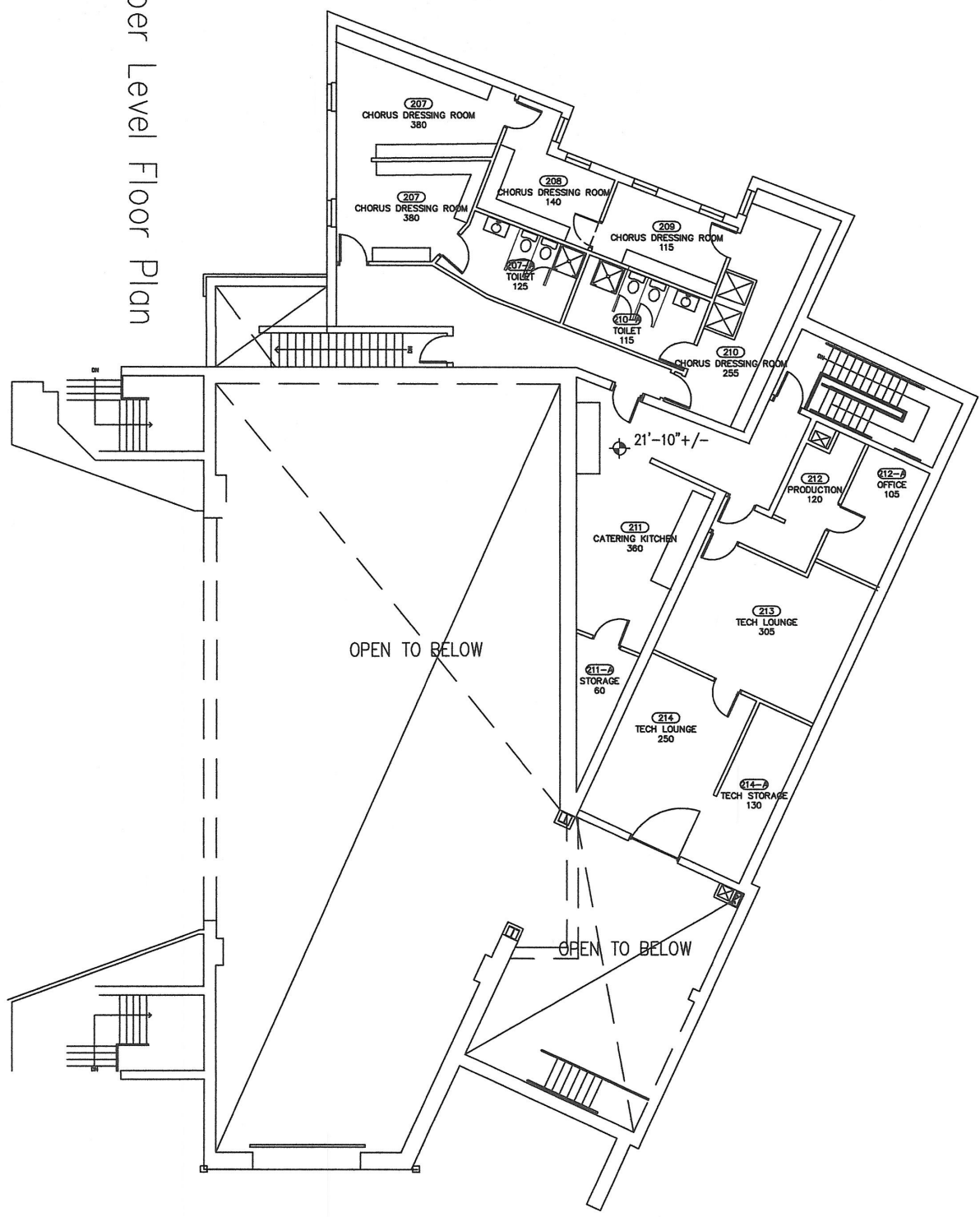
ey

Unit umber

Universe Address

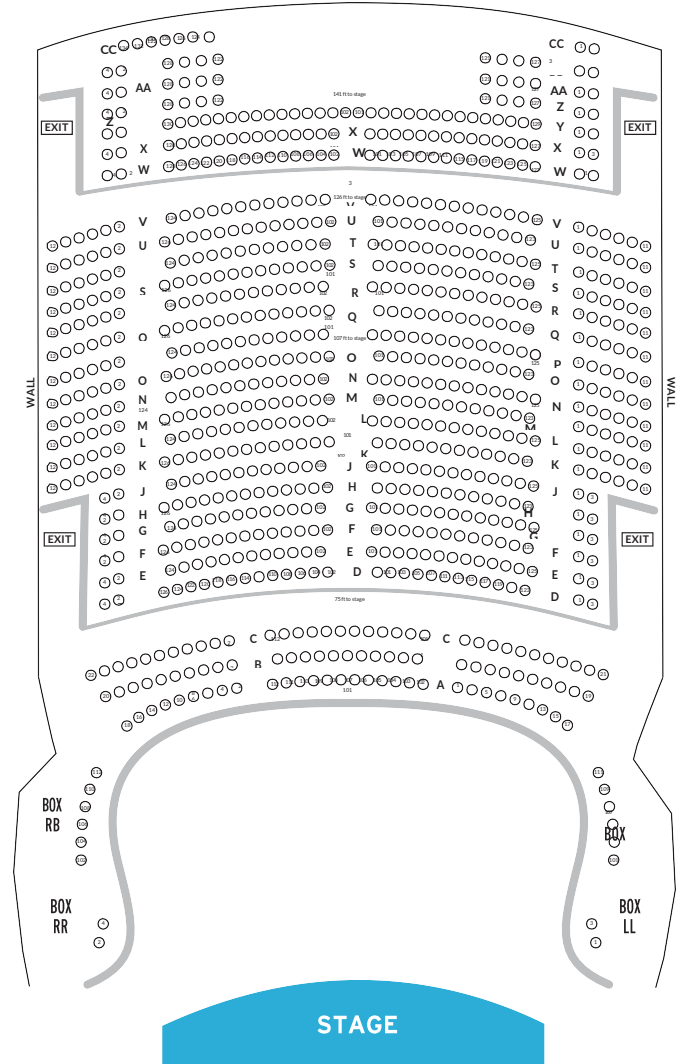
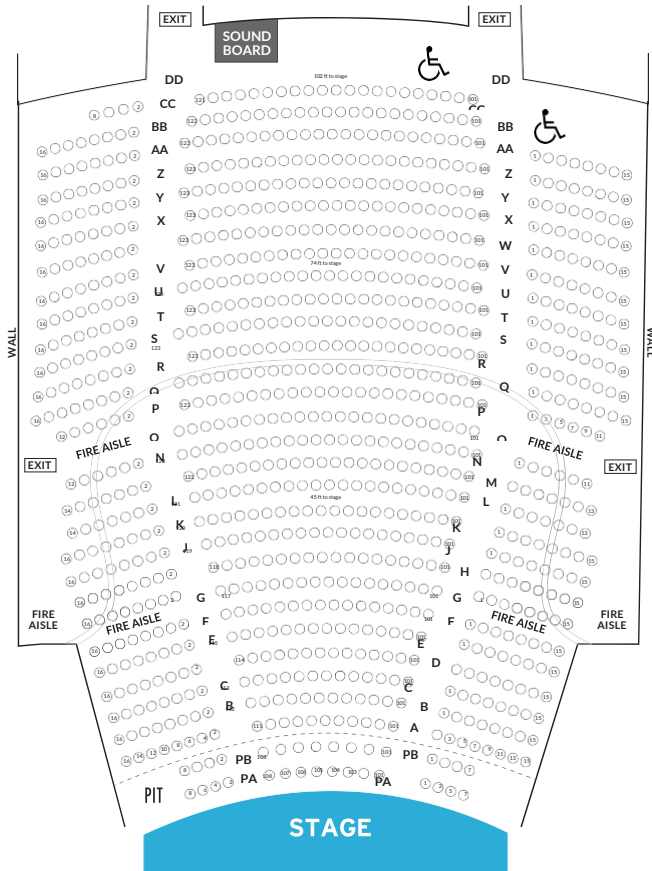


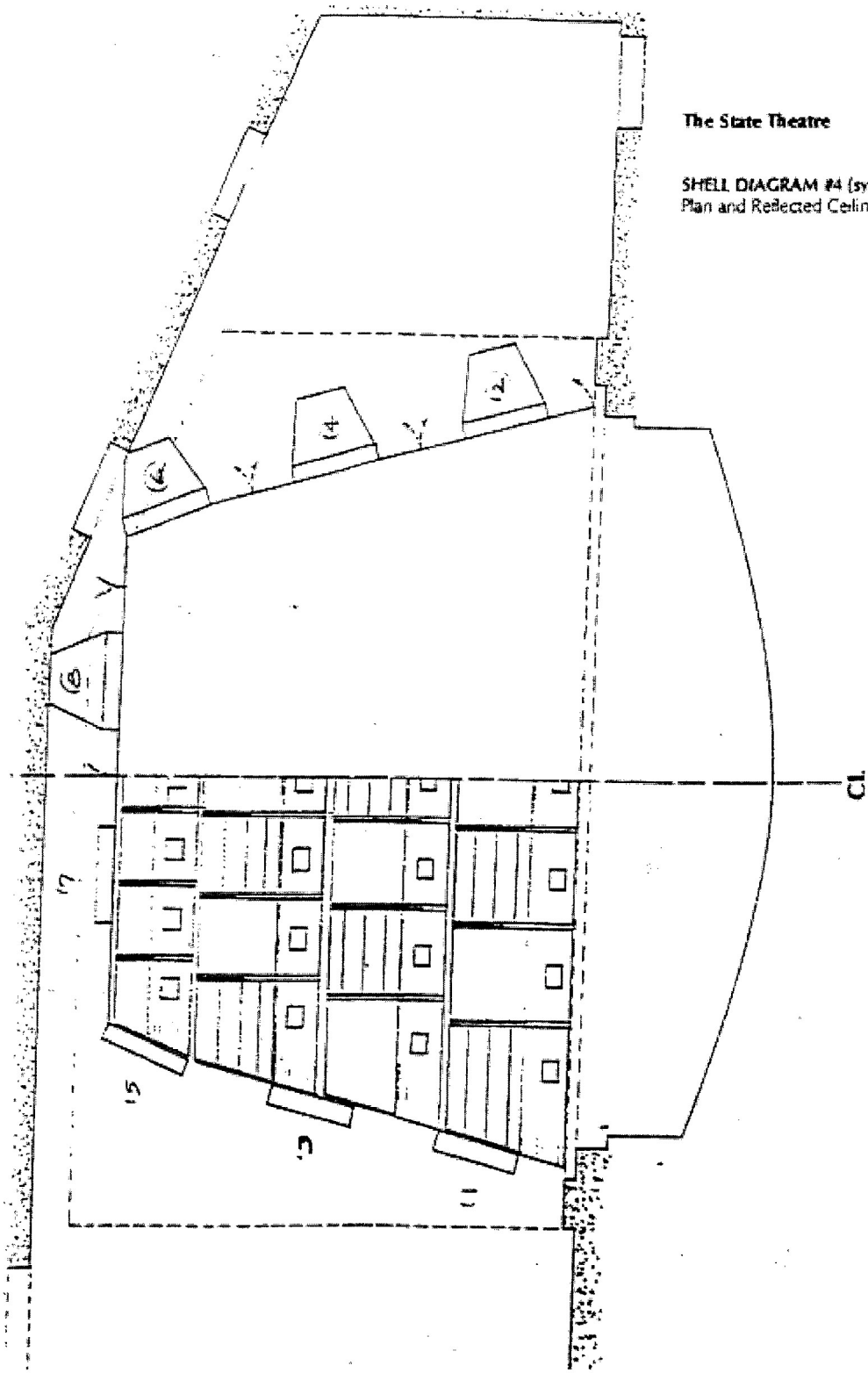
Upper Level Floor Plan





SEAT MAP 2





The State Theatre

SHELL DIAGRAM #4 (symphony orchestra)
 Plan and Reflected Ceiling