



S | **STATE** | **THEATRE**
NEW JERSEY

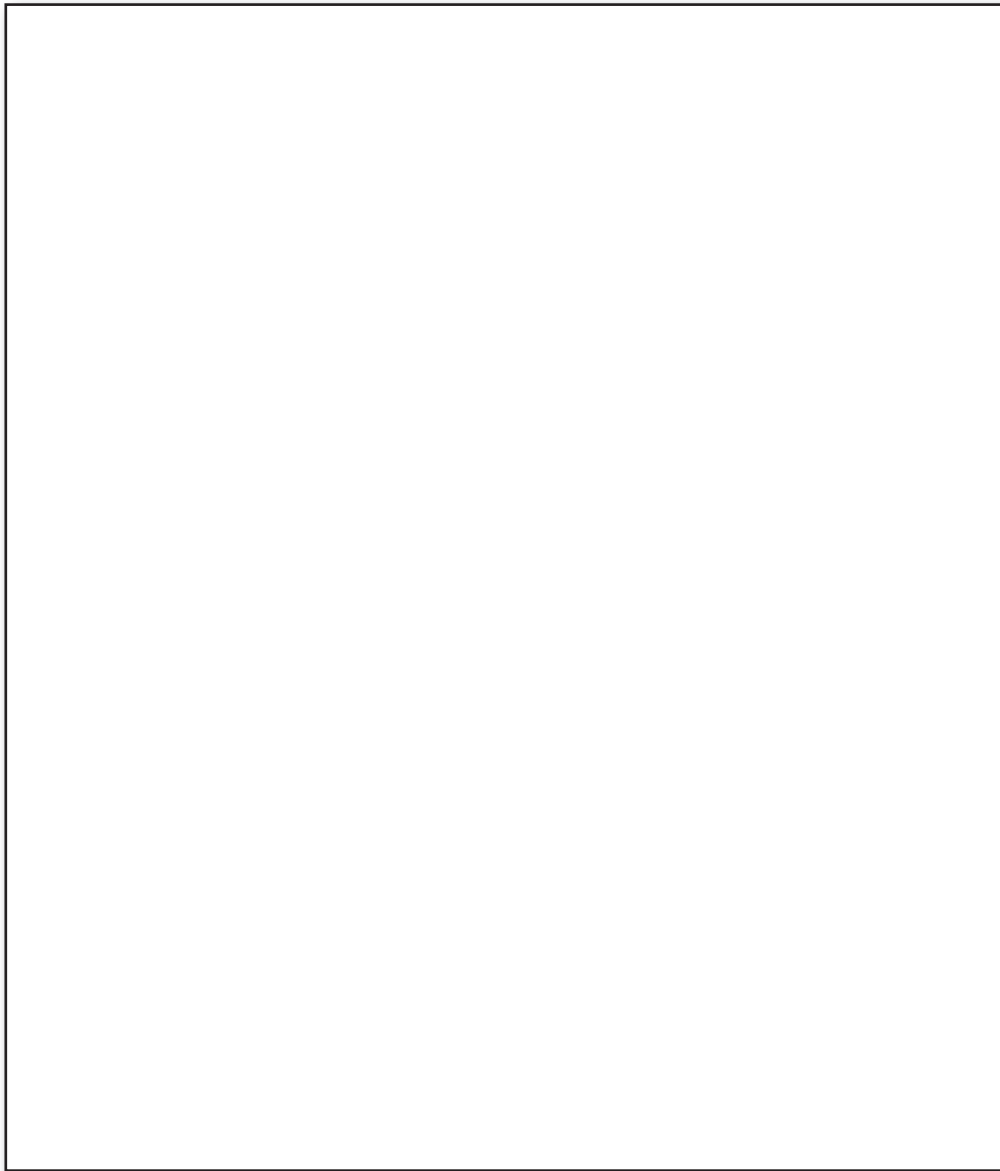
**SENSORY-
FRIENDLY**
PERFORMANCES

**SOCIAL
STORY**

I am going to State Theatre New Jersey
in New Brunswick to see a show!



I will be going to the show with



We will have a lot of fun!

At the show I will see a musician or a storyteller.

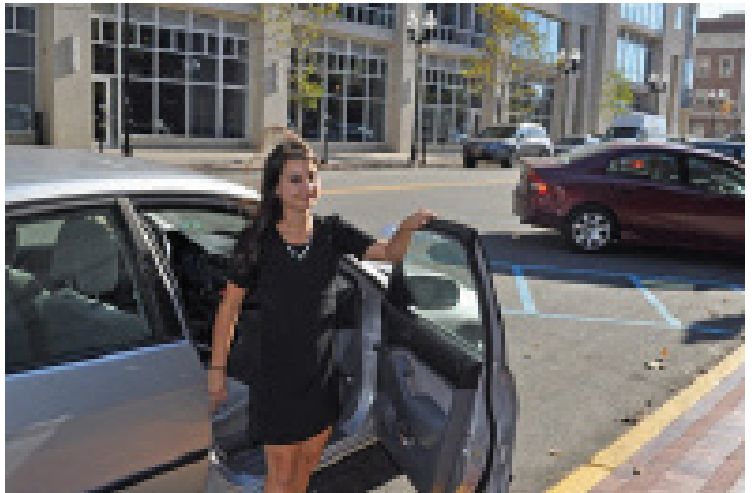
They might play instruments, play with puppets, or dance around.



I will go to the theater in a car.



I will get out of the car in front of the theater.



Or we will park nearby and walk to the theater.



**I will go into the theater.
I will be in the lobby.**



**A helper called an usher
will take my ticket and
tell me where to go next.**

I will walk up the stairs to the second floor.



The second floor looks like this.



Then I will go up some more stairs into another room.



Or I might go into an elevator.

**When I leave the elevator, I will
see a long hallway like this.**

**I will walk down the hallway and
go into the last room.**



I will see the show in this room.



**There will be a bathroom close by
I can use if I need to.**



I can sit on a chair to watch the show.



photo: Nancy Swolensky

Or I can sit up front on the floor.



photo: Jeffrey Auger

Before the show starts, someone will come out to talk.

They will say that we will get milk and a chocolate chip cookie after the show!



I will stay in my seat and listen while the person is talking.

Then the show will start.

I will stay in my seat.

I will watch and listen to the show.

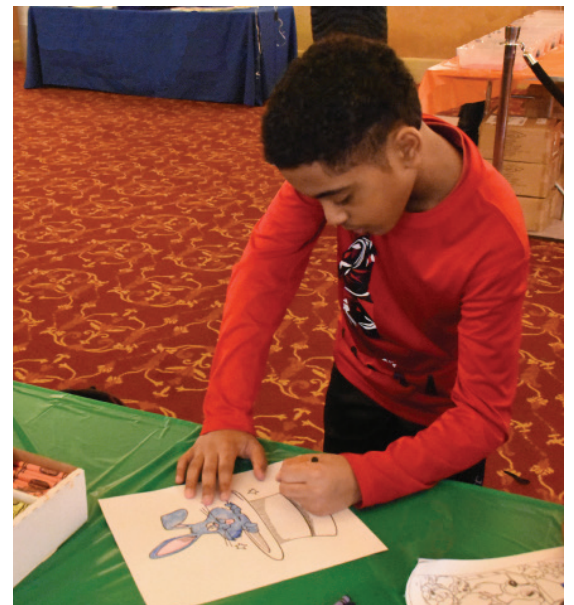


Sometimes the music will get very loud.

If it gets too loud, I can cover my ears or put on my headphones.



Or I can take a break in a quiet area where I can sit, color, or do something else.



The performer might choose some people to be part of the show.

If I want to be part of the show, I will raise my hand and wait patiently for them to pick me.



If they pick me, I will follow instructions and do what they tell me to do.

**They might not pick me to be part of the show.
And that's okay.**

**When the show is over, I can
applaud to show the musicians
I liked their show.**



Then I will go down the stairs to the lobby.



In the lobby, I will get some milk and a cookie!



Then I will leave the theater and go home.



Going to a show is so much fun!



ENJOY THE SHOW!



Sensory-Friendly Performances Social Story © 2025
State Theatre New Jersey

Find us at www.STNJ.org

Contact: education@STNJ.org

State Theatre New Jersey—creating extraordinary experiences through the power of live performance.

EDUCATION & COMMUNITY ENGAGEMENT SUPPORTERS



Grant funding has been provided by the Middlesex County Board of Chosen Freeholders through a grant award from the Middlesex County Cultural and Arts Trust Fund.

Performances for Schools are made possible in part by Kinder Morgan Foundation and PSEG.

The Early Childhood Arts & Literacy program is made possible in part by NJM Insurance Group, Plymouth Rock Assurance, PNC Bank, and PSEG.

Sensory-friendly performances are supported in part by The Thomas and Agnes Carvel Foundation, The Wawa Foundation, and The Arnold A. Schwartz Foundation.



Made possible by funds from the New Jersey State Council on the Arts, a partner agency of the National Endowment for the Arts.

